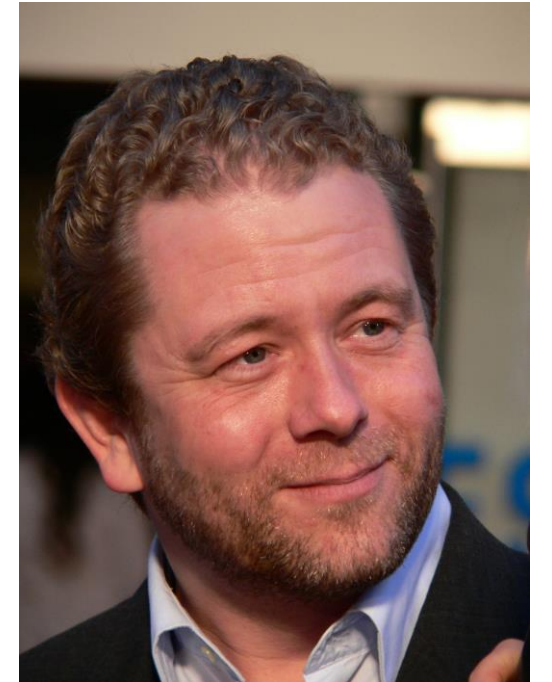


**A PEOPLE WHO ...
IMITATE CHRIST**

BUILDING A KINGDOM CULTURE

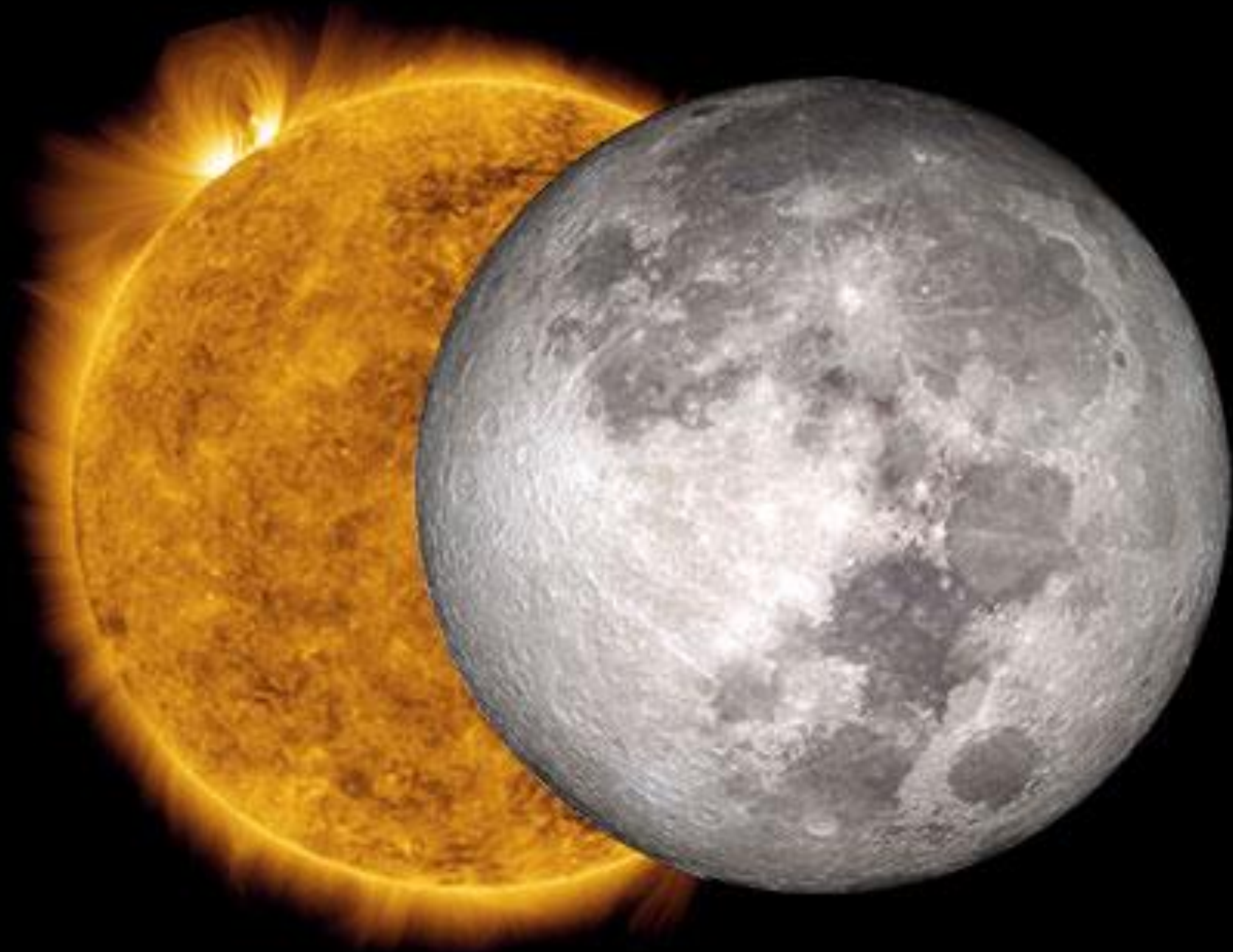


A PEOPLE WHO IMITATE CHRIST



A PEOPLE WHO IMITATE CHRIST

A picture of two heavenly bodies ...



A PEOPLE WHO IMITATE CHRIST

Past the equinox into autumn - season of sunrises and sunsets





A PEOPLE WHO IMITATE CHRIST

- Same relative size in the sky

A PEOPLE WHO IMITATE CHRIST

- Same relative size in the sky



The chances of that must
be astronomical

A PEOPLE WHO IMITATE CHRIST

- Same relative size in the sky



A PEOPLE WHO IMITATE CHRIST

- Same relative size in the sky
- What is the difference?

A PEOPLE WHO IMITATE CHRIST

- Same relative size in the sky
- What is the difference?
- The sun shines
- The moon reflects

A PEOPLE WHO IMITATE CHRIST

- Same relative size in the sky
- What is the difference?
- The sun shines
- The moon reflects
- Moonlight is reflected sunlight

A PEOPLE WHO IMITATE CHRIST

- A diamond does not shine
- (Not even crazy ones)



A PEOPLE WHO IMITATE CHRIST

- A diamond does not shine
- (Not even crazy ones)
- It has no internal power source
- Put it in the dark ... it disappears!



A PEOPLE WHO IMITATE CHRIST

- A diamond does not shine
- (Not even crazy ones)
- It has no internal power source
- Put it in the dark ... it disappears!
- But if even the smallest chink of light is let in
- It begins to glint again



A PEOPLE WHO IMITATE CHRIST

- Jesus is light, our challenge is to **reflect him!**
- We can show the world what Jesus is like ...
- by the way we live our lives
- ... by the way we treat people
- ... by the way we conduct our lives
- ... by the way we talk
- **Illuminate the world** by showing them the person of Jesus!



A PEOPLE WHO IMITATE CHRIST

As we gaze on your kingly brightness
So our faces display your likeness
Ever changing from glory to glory
Mirrored here may our lives tell your story



A PEOPLE WHO IMITATE CHRIST

As we gaze on your kingly brightness
So our faces display your likeness
Ever changing from glory to glory
Mirrored here may our lives tell your story

Shine on me, shine on me



A PEOPLE WHO IMITATE CHRIST

*Shine, Jesus, shine
Fill this land with the Father's glory
Blaze, Spirit, blaze
Set our hearts on fire
Flow, river, flow
Flood the nations with grace and mercy
Send forth your word
Lord, and let there be light*

Graham Kendrick, 1987

A PEOPLE WHO IMITATE CHRIST

John 8: ¹² When Jesus spoke again to the people, he said, **‘I am the light of the world.** Whoever follows me will never walk in darkness but will have the light of life.’”

Not ordinary light, that we can see, but **the light of life**

- Jesus lights the path to heaven – if we follow his teachings and the example he set, i.e. **if we imitate him**, we won't trip or fall away
- The **path forward is clear** – if we stray then it is through our choice, not his failing to show it properly

A PEOPLE WHO IMITATE CHRIST

Matthew 5: ¹⁴ **‘You are the light of the world.** A town built on a hill cannot be hidden. ¹⁵ Neither do people light a lamp and put it under a bowl. Instead they put it on its stand, and it gives light to everyone in the house. ¹⁶ In the same way, let your light shine before others, that they may see your good deeds and glorify your Father in heaven.

- Our light is the light that Jesus shines upon us so that we can reflect it to the world
- To achieve what Jesus’ light does – illuminate the path

A PEOPLE WHO IMITATE CHRIST

How can both Jesus and all Christians be the light of the world?

John 9: ⁴ As long as it is day, we must do the works of him who sent me. Night is coming, when no one can work. ⁵ **While I am in the world, I am the light of the world.'**

- He is going to be handing over the job of shining the 'light of life' to someone else ...
- Guess who ...

A PEOPLE WHO IMITATE CHRIST

- The big question is not who?, but how?
- Reflected images imitate the original one
- So we reflect Jesus **by being his imitators**

Philippians 2: Therefore if you have any encouragement from being united with Christ, if any comfort from his love, if any common sharing in the Spirit, if any tenderness and compassion, ² then make my joy complete by being **like-minded**, having the same love, being one in spirit and of one mind. ³ Do nothing out of selfish ambition or vain conceit. Rather, in humility value others above yourselves, ⁴ not looking to your own interests but each of you to the interests of the others. ⁵ In your relationships with one another, **have the same mindset as Christ Jesus**

A PEOPLE WHO IMITATE CHRIST

1 Thessalonians 2: ¹⁴ For you, brothers and sisters, **became imitators** of God's churches in Judea, which are in Christ Jesus: you suffered from your own people the same things those churches suffered from the Jews

Hebrews 13: ⁷ Remember your leaders, who spoke the word of God to you. Consider the outcome of their way of life and **imitate their faith.**

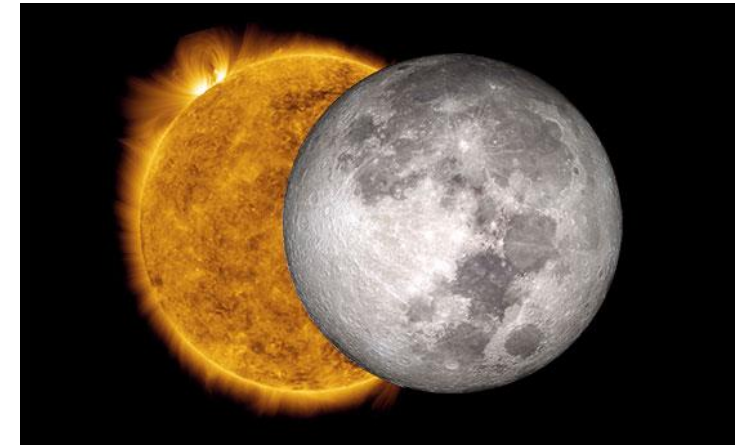
3 John 1: ¹¹ Dear friend, do **not imitate what is evil but what is good.** Anyone who does what is good is from God. Anyone who does what is evil has not seen God.

A PEOPLE WHO IMITATE CHRIST

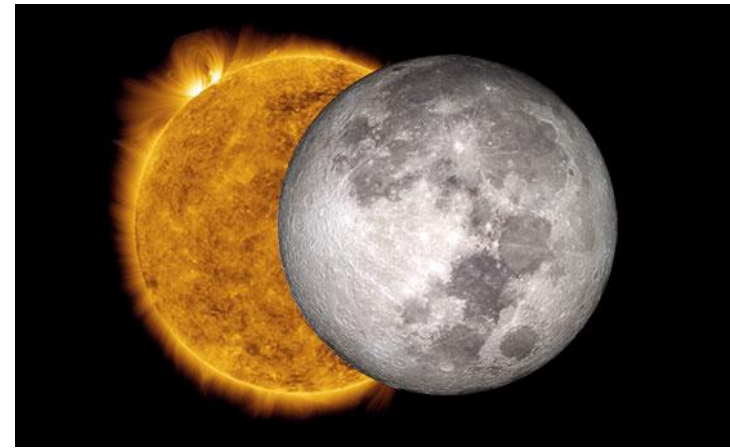
When the sun has gone, the moon can illuminate

- But humans, even the best of us, are imperfect reflectors
- Some of the power is always lost when light is reflected
- That's why moonlight is not as strong as sunlight!

What should our response to this be?



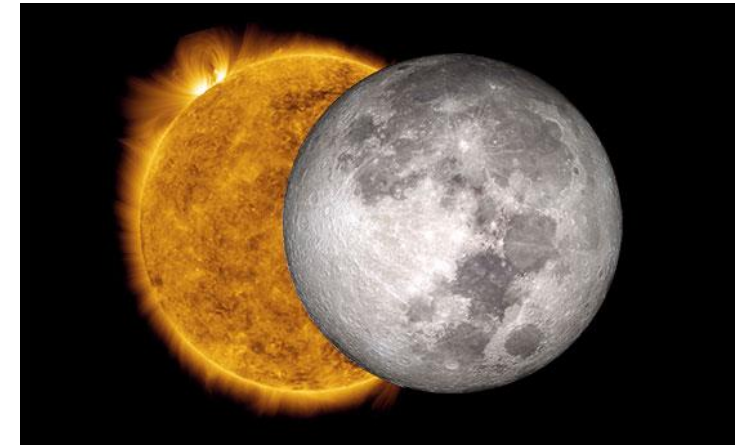
A PEOPLE WHO IMITATE CHRIST



We are not always in the best position to reflect the light

- The moon is only full for a few days a month
- It is we who have moved, not God
- ➔ Get back into the place where we can be the best reflectors

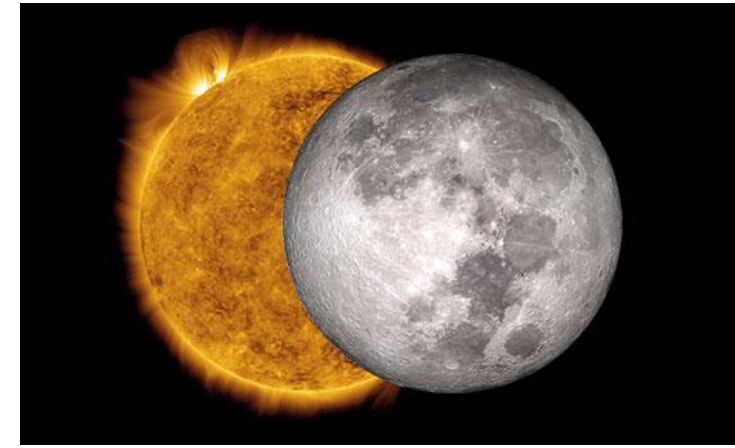
A PEOPLE WHO IMITATE CHRIST



A dirty reflector is less efficient

- Parts of the moon are poor reflectors because their reflectivity is low
- They have become dirty from space debris ... and eruptions of dark material
- ➔ Have a regular clean – keep short accounts with each other and with God

A PEOPLE WHO IMITATE CHRIST



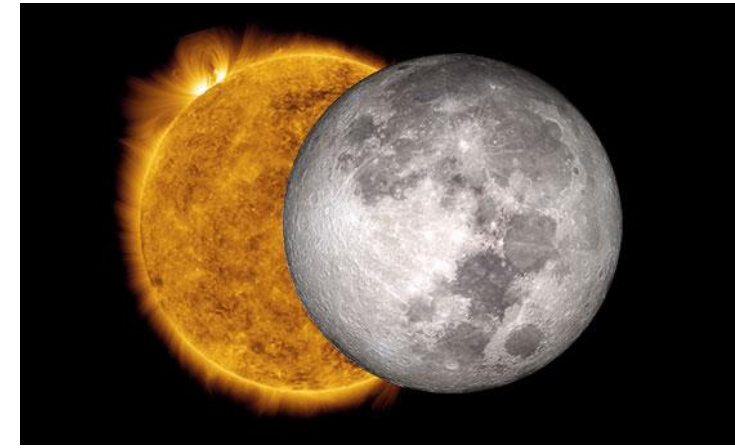
Sometimes the moon can eclipse the sun

- This happens when the moon is aligned exactly in front of the sun
- Very rare because of their same relative sizes
- (Same relative size: Christ born as a man ...)
- ➔ Do not position ourselves before Christ Get out of his light!

A PEOPLE WHO IMITATE CHRIST

Even the strongest light cannot penetrate through thick walls

- Matt 5:15 - Put our lamps on stands, not under bushels
- ➔ Get out there! Be **in** the community (although not **of** it)



A PEOPLE WHO IMITATE CHRIST

Nowhere is a no-go area

No-one is a no-go person

No time is a no-go time

A PEOPLE WHO IMITATE CHRIST

Consider this when we see a sunrise or sunset this autumn

